

SYMMETRIC LIFTS *WIDER DRIVE THRU FOR TRUCKS AND VANS*

FRAME ENGAGING SYMMETRICAL DESIGN

All of Rotary's award winning light duty features can be found on our heavy duty two-post lifts. With available capacities up to 18,000 pounds and options like low ceiling models, you can rest assured we have a lift for your heavy duty job.

SPO15 15,000 LBS. CAPACITY

VERSATILE SUPER DUTY LIFT

The Rotary SPO15; trust the industry standard symmetrical 15,000lbs. two post lift.

- Air operated single point lock release
- Stackable thread up adapters make contact to the vehicle quick and easy
- The locking system engages every 4" and is fully accessible for maintenance
- Overhead height adjustments available
- ALI Gold Certified

FRAME CONTACT LIFT
LOW CEILING MODEL AVAILABLE



Model shown: SPO15N310RD
Shown with optional accessories and additional equipment



Model shown: SPO18N310BL
Shown with optional accessories and additional equipment



SPO18 18,000 LBS. CAPACITY

SERVICE FLEET LINES and MORE

The Rotary SPO18 sets the standard for reliability and quality in heavy duty lifts.

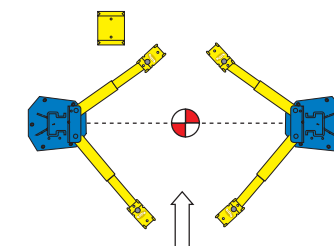
- Air operated single point lock release
- Thread up adapters
- Comes with (6) additional adapters for an additional 10" of reach
- Contains arm restraints in all arms
- Overhead height adjustments available
- ALI Gold Certified

FRAME CONTACT LIFT
LOW CEILING MODEL AVAILABLE



True Symmetrical Lifts

- Columns are not rotated
- Greater width between columns accommodates larger vehicles and improve vehicle access - allows max door opening on trucks and vans for improved access to vehicle interior



Symmetrical column orientation

Vehicle load is centered between the columns to maximize lifting capacity

SYMMETRIC HEAVY DUTY SPO SERIES LIFT FEATURES

Five position **wheel spotting dishes** come standard

Stackable adapters with thread-up adjustment



Standard on 15,000 to 18,000 lbs. capacity lifts

SPO LIFT OPTIONS

Air/Electric Utility Boxes

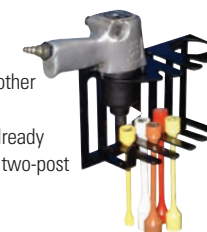
Mount easily on any column and provides quick access to utilities

- Two 110v electric outlets and air connection
- The filter/regulator/lubricator helps extend the life of your air tools



Tool Holder

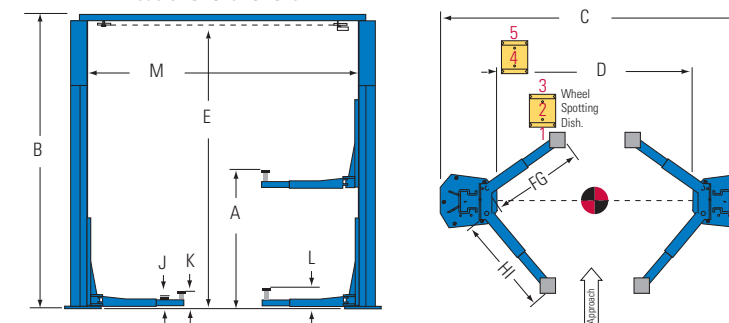
The tool holder keeps air guns, torque sticks, and other tools within easy reach. Mounts easily in holes already drilled and tapped in the two-post column.



LIFT SPECIFICATIONS
15,000lbs. / 18,000lbs. CAPACITIES

Model:	SPO15	SPO18
A. Rise*	76 7/8" / 88 7/8" (1953-2257mm)	76 7/8" / 88 7/8" (1953-2257mm)
Height Overall:	15' / 15' 6" (4572-4724mm)	15' / 15' 6" (4572-4724mm)
B. Standard Adjustments	16' / 16' 6" (4877-5029mm)	16' / 16' 6" (4877-5029mm)
Low Ceiling (LC)	13' 6" / 14' 6" (4115-4420mm)	13' 6" / 14' 6" (4115-4420mm)
C. Width Overall** (outside of base plate)	12' 11" (3937mm)	12' 11" (3937mm)
D. Drive-Thru Clearance	101 1/2" (2578mm)	101 1/2" (2578mm)
E. Floor To Overhead Switch	14' 5" - 15' 11" (4394-4851mm)	14' 5" - 15' 11" (4394-4851mm)
F. Reach (front arm min.)	38 1/2" (978mm)	38 1/2" (978mm)
G. Reach (front arm max.)	62" (1574mm)	62" (1574mm)
H. Reach (rear arm min.)	38 1/2" (978mm)	38 1/2" (978mm)
I. Reach (rear arm max.)	62" (1574mm)	62" (1574mm)
J. Min. Adapter Height	5 3/4" - 7 1/2" (146-190mm)	5 3/4" - 7 1/2" (146-190mm)
K. Low Step Height	10 3/4" - 12 1/2" (273-318mm)	10 3/4" - 12 1/2" (273-318mm)
L. High Step Height	15 3/4" - 17 1/2" (400-445mm)	15 3/4" - 17 1/2" (400-445mm)
M. Inside Columns	120 1/4" (3054mm)	120 1/4" (3054mm)
Lifting Capacity	15,000 lbs. (6804kg)	18,000 lbs. (8165kg)
Motor / Voltage***	2 HP / 208v-230v	2 HP / 208v-230v
Time of Full Rise	85 seconds	85 seconds
Ceiling Height Required:		
Standard	15' 1" min (4597mm)	15' 1" min (4597mm)
Low Ceiling (LC)	13' 7" min (4140mm)	13' 7" min (4140mm)
Max Load (per arm)	3,750 lbs. (1700kg)	4,500 lbs. (2041kg)
Min. Bay Size	15' x 30' (4572 x 9144mm)	15' x 30' (4572 x 9144mm)

Models: SPO15 SPO18



* Rise is measured from floor to adapter in highest position. On standard height models, cylinder height is higher than overall height.

** Overall heights and widths reflect standard settings. Alternate settings may be available, refer to Installation Instruction Manual or consult factory for details.

*** Optional 3-phase electrical available

Standard color of lifts are blue and red unless otherwise noted. Gray and black are available at no additional charge. Additional colors are available, consult your Rotary® representative for details.

	RAL5005		RAL3002
	RAL7040		RAL9005