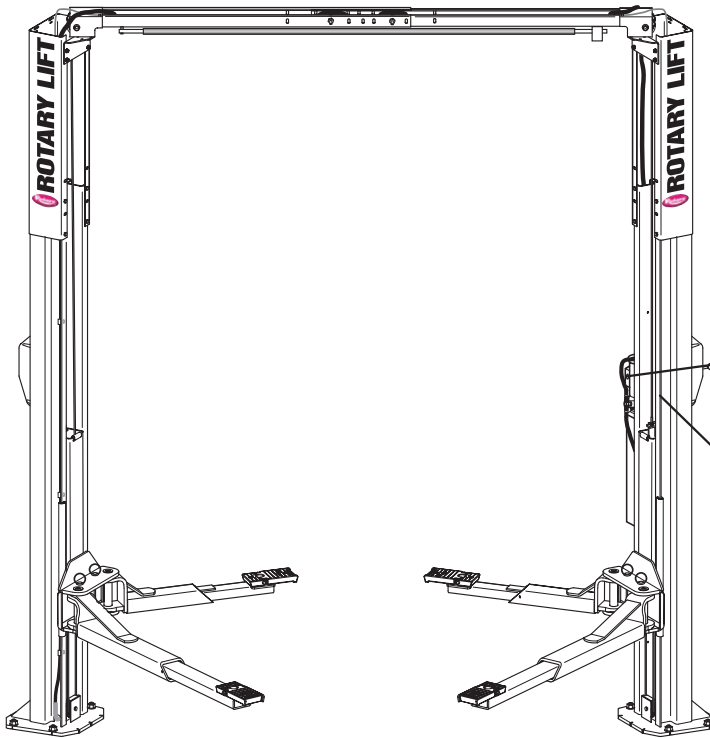





# SPOA10NB, SPOA10, SPO10

(500 Series Lifts)  
Capacity 10,000 lbs.

P  
A  
R  
T  
S  
  
B  
R  
E  
A  
K  
D  
O  
W  
N

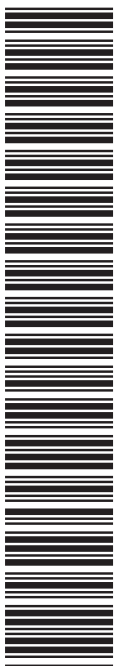


|                                                                                                                                            |     |       |                |       |
|--------------------------------------------------------------------------------------------------------------------------------------------|-----|-------|----------------|-------|
| GHS <sup>TM</sup>                                                                                                                          | PT# | _____ | N <sup>o</sup> | _____ |
|                                                                                                                                            | PH  | _____ | MAX AMB        | _____ |
| DUTY                                                                                                                                       |     | _____ | INS            | _____ |
| THERMAL PROTECTION                                                                                                                         |     | _____ |                |       |
| HP                                                                                                                                         |     | _____ | Kw             | _____ |
| AMPS                                                                                                                                       |     | _____ | VOLTS          | _____ |
| HZ                                                                                                                                         |     | _____ | RPM            | _____ |
| IP                                                                                                                                         |     | _____ |                |       |
| <small>CE E C 34-1</small>                                                                                                                 |     |       |                |       |
| <small>WARNING: MOTOR MUST BE GROUNDED IN ACCORDANCE WITH LOCAL AND NATIONAL ELECTRICAL CODES TO PREVENT SERIOUS ELECTRICAL SHOCKS</small> |     |       |                |       |

|                                                                                       |                                                   |             |                 |
|---------------------------------------------------------------------------------------|---------------------------------------------------|-------------|-----------------|
| Rotary <sup>®</sup>                                                                   | <b>IMPORTANT</b>                                  |             | NPS3            |
|                                                                                       | DO NOT REMOVE THIS TAG<br>WARRANTY IDENTIFICATION |             |                 |
| 800-445-5438                                                                          | MODEL:                                            |             | MADE IN THE USA |
|                                                                                       | CAP. LBS:                                         |             |                 |
|                                                                                       | SERIAL NUMBER                                     |             |                 |
|  |                                                   |             |                 |
| <small>MANUFACTURED UNDER ONE OF THESE PATENTS<br/>5009287</small>                    |                                                   |             |                 |
| Rotary Lift <sup>®</sup>                                                              | A DOVER COMPANY                                   | Madison, IN |                 |

**IMPORTANT:** When ordering parts or requesting service always give exact model and power unit serial number. Model number is shown on nameplate attached to power unit column. Power unit serial number is located on side of power unit.

|                                                                                 |                           |
|---------------------------------------------------------------------------------|---------------------------|
| <b>OWNERS RECORD</b><br>Complete information at right and keep in a safe place. | Date Installed _____      |
|                                                                                 | Installed in Bay # _____  |
|                                                                                 | Power Unit Serial # _____ |
|                                                                                 | Power Unit Model # _____  |
|                                                                                 | Lift Serial # _____       |
|                                                                                 | Lift Model # _____        |
| <b>NOTE: For replacement parts -See your nearest Rotary Parts Distributor.</b>  |                           |



|                                                     |               |                                                       |          |
|-----------------------------------------------------|---------------|-------------------------------------------------------|----------|
| 1. L.H. Column Weldment.....                        | N752          | 38. Overhead Hose                                     |          |
| 2. R.H. Column Weldment .....                       | N755          | Standard.....                                         | FJ839    |
| 3. Column Extension                                 |               | EH-1 MODEL.....                                       | FJ842    |
| Standard Height .....                               | N470          | EH-2 MODEL.....                                       | FJ843    |
| EH-1 MODEL .....                                    | N471          | EH-4 MODEL (SPO10 only).....                          | FJ845    |
| EH-2 MODEL .....                                    | N472          | 39. Equalizer Cables                                  |          |
| EH-4 MODEL (SPO10 only).....                        | N474          | SPOA10NB .....                                        | N384     |
| 4. Carriage Yoke Weldment .....                     | N822          | SPOA10NB EH-1 MODEL.....                              | N385     |
| 5. Arm Pin .....                                    | N2154         | SPOA10NB EH-2 MODEL.....                              | N386     |
| 6. 1/4"-20NC x 3/4" Lg. HHCS .....                  | 40099         | SPOA10 .....                                          | N372     |
| 7. Hydraulic Cylinder                               |               | SPOA10 EH-1 MODEL.....                                | N378     |
| 68" Rise.....                                       | N380          | SPOA10 EH-2 MODEL.....                                | N373     |
| 71" Rise .....                                      | N382          | SPO10.....                                            | N374     |
| 8. Power Unit                                       |               | SPO10 EH-1 MODEL.....                                 | N379     |
| 1Ø 60Hz .....                                       | **P1302/P3302 | SPO10 EH-2 MODEL.....                                 | N375     |
| 1Ø 50Hz .....                                       | **P1389/P3389 | SPO10 EH-4 MODEL.....                                 | N376     |
| 3Ø.....                                             | **P1347/P3347 | 40. Capacitor Box .....                               | FA7147-1 |
| 3Ø 575V .....                                       | **P1359/P3359 | Capacitor Box Cover Plate.....                        | FA7366-1 |
| 3Ø 380V (S Model).....                              | **P1510/P3510 | Drum Switch.....                                      | FA7364   |
| 9. Power Unit Hose .....                            | FJ837         | Drum Switch Lever.....                                | FA7364-1 |
| 10. 5/16"-18NC x 1-1/2" Bolt (Full Thread) .....    | 40271         | M5 x 45 PHMS, Plated.....                             | 41672    |
| 11. 5/16" External Tooth Lockwasher.....            | 40854         | 41. Locking Latch Cable .....                         | FJ7600   |
| 12. 5/16"-18NC Hex Nut .....                        | 40670         | 42. Cable Guide .....                                 | N618     |
| 13. Actuator Pin Handle .....                       | FJ7985-1      | 43. 3/8"-16NC Flanged Locknut.....                    | 40664    |
| 14. Actuator Pin .....                              | N121-1        | 44. Sheave Shaft .....                                | FJ7444-8 |
| 15. Retaining Pin.....                              | N119-3        | 45. Actuator Assembly (3Ø).....                       | N432-5   |
| 16. Arm Restraint Spring.....                       | FJ7656-2      | 46. Cable End Bracket.....                            | N619     |
| 17. Bleeder Screw (Specify Manufacturer) .....      | N/A           | 47. Hose Clip .....                                   | N383     |
| 18. Carriage Bumper.....                            | FA941         | 48. L.H. Overhead Assembly (Outer).....               | N480     |
| 19. Arm Restraint Pawl .....                        | N2121         | 49. R.H. Overhead Assembly (Inner).....               | N481     |
| 20. Approach bumper .....                           | FJ7391-1      | 50. Branch Tee.....                                   | FJ7668   |
| 21. 5/8"-11NC Nylon Insert Lock Nut .....           | 40743         | 51. Column Mounting Bracket.....                      | N439     |
| 22. Truarc #5304-75 Klipping for 3/4" Shaft.....    | 41411         | 52. 3/8"-16NC x 3/4" Carriage Bolts .....             | N/A      |
| 23. Sheave.....                                     | N377          | 53. 1/4"-20NC Flanged Locknut.....                    | 40641    |
| 24. 1/4"-20NC Zinc Hex Nut.....                     | 40627         | 54. 3/4" Spacer .....                                 | FJ7871   |
| 25. Sheave Cover .....                              | N119-1        | 55. Cutoff Switch Assembly                            |          |
| 26. 1/4"-20NC x 3/8" Lg. PHMS Plated (2 pcs.)....   | 40063         | 1Ø.....                                               | N413     |
| 27. Slider block .....                              | FJ7360        | 3Ø.....                                               | N432     |
| 28. 3/4" Concrete Anchor .....                      | FJ7380        | Cutoff Switch                                         |          |
| 29. 1-1/2" O.D. x .760-.770" I.D. x .045" Bushing . | 41388         | 1Ø.....                                               | N413-1   |
| 30. 1/4"-20NC x 2-3/4" HHCS.....                    | 40114         | 3Ø.....                                               | N432-1   |
| 31. 1/4"-20NC Insert Locknut.....                   | 40642         | 56. 1/4" External Tooth Lockwasher.....               | 40779    |
| 32. 1/8" x 1" Lg. Cotter Pin (3Ø only).....         | 41200         | 57. 1/4"-20NC x 1" HHCS Grade 5 .....                 | 40108    |
| 33. Switch Bar Assembly                             |               | 58. Spring Pin-1/4" dia. x 1-1/2" Lg. (Stainless).... | 14427    |
| 1Ø SPOA10NB.....                                    | N415          |                                                       |          |
| 1Ø SPOA10/SPO10 .....                               | N467          |                                                       |          |
| 3Ø.....                                             | N434          |                                                       |          |
| 34. Wheel Spotting Dish Kit .....                   | FF729         |                                                       |          |
| 35. 1/4" Flat Washer .....                          | 40795         |                                                       |          |
| 36. 3/8"-16 NC x 3/4" Long Flanged HHCS .....       | 40124         |                                                       |          |
| *37. Arm Restraint Kit (1 arm) .....                | *N2148        |                                                       |          |

---

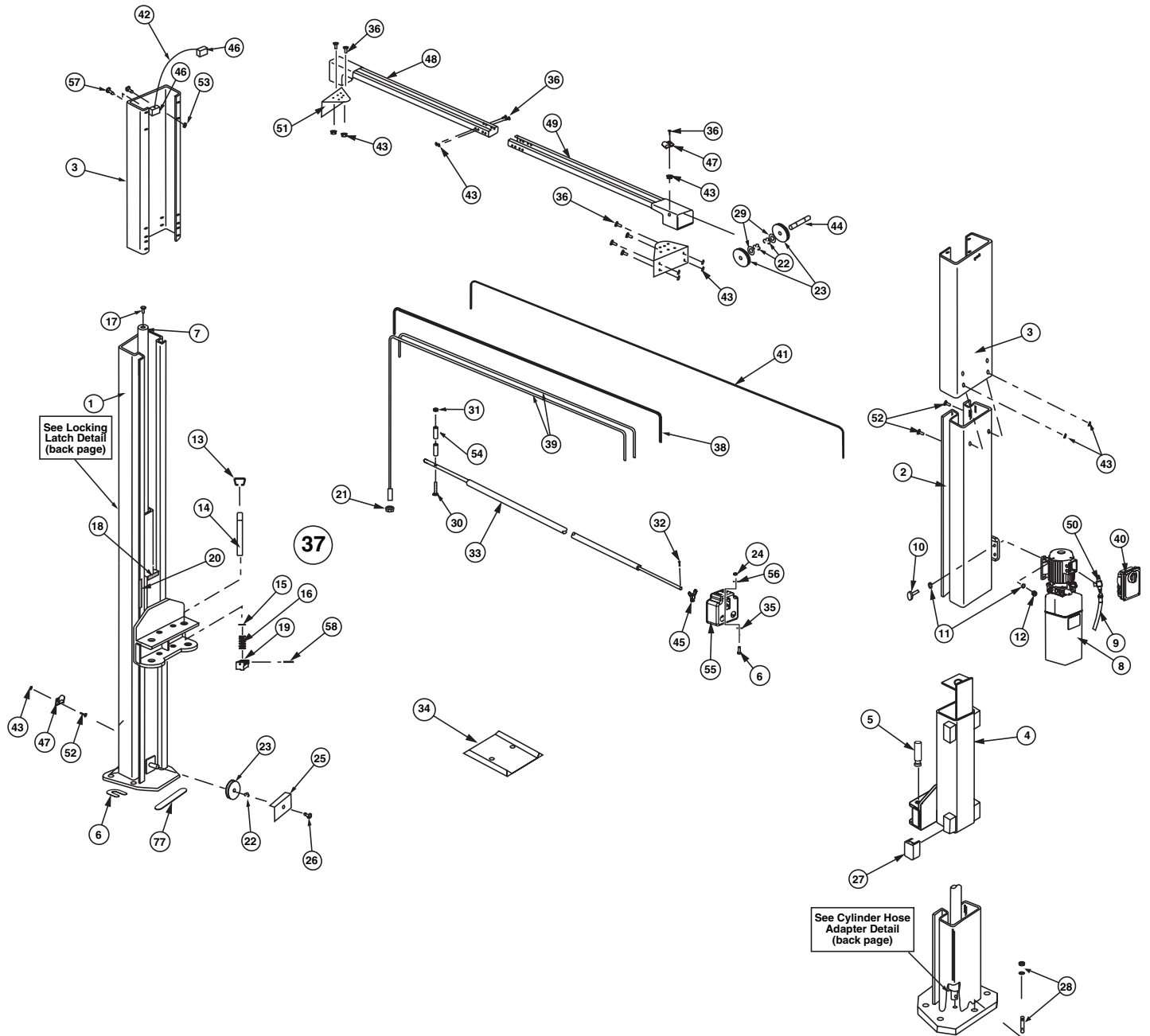
\*Arm Restraint Kit (1 Arm) Includes items 13, 14, 15, 16, 19 & 58. Also includes Restraint Gears and attaching hardware (items 21, 22 & 23) from Arm Detail section.

\*\*Two different power units were used. Please verify your model number before ordering parts.

Note: Standard hardware items should be purchased from local hardware source when possible.



Care should be taken to use hardware equal to that specified in this listing. (If grade is not specified, use Grade 2 minimum.)



1. Front Outer Arm
  - SPOA10NB (50X/51X/58X Series)..... \*N2175-1
  - SPOA10 (50X/51X/58X Series)..... \*N2172-1
  - SPOA10 (5NX Series)..... \*N2175-1
  - SPO10 (50X/51X/58X Series)..... \*N2174-1
2. Rear Outer Arm
  - SPOA10NB (50X/51X/58X Series)..... \*N2177-1
  - SPOA10 (50X/51X/58X/5NX Series)..... \*N2173-1
  - SPO10 (50X/51X/58X Series)..... \*N2174-1
3. Front Inner Arm Assembly (Includes Flip-Up Adapters)
  - SPOA10NB (50X Series) ..... \*N2175-2
  - SPOA10 (50X Series) ..... \*N2172-2
  - SPOA10 (5NX Series)..... \*N2175-2
  - SPO10 (50X Series)..... \*N2174-2
4. Rear Inner Arm Assembly (Includes Flip-Up Adapters)
  - SPOA10NB (50X Series) ..... \*N2174-2
  - SPOA10 (50X/5NX Series) ..... \*N2173-2
  - SPO10 (50X Series)..... \*N2174-2
5. Front Inner Arm
  - SPOA10NB (51X Series) ..... \*N2181-1
  - SPOA10 (51X Series) ..... \*N2178-1
  - SPO10 (51X Series)..... \*N2180-1

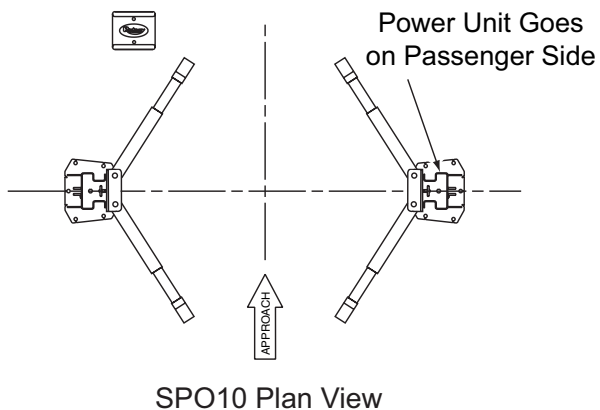
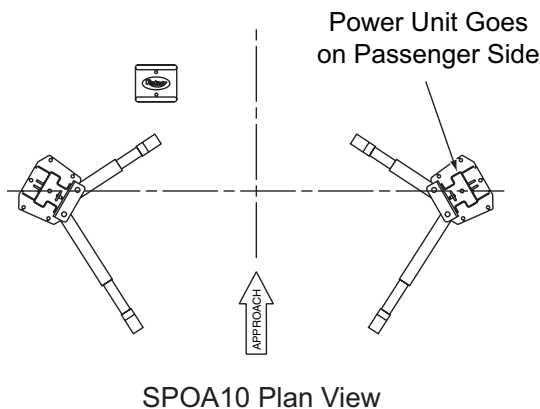
Front Inner Arm

  - SPOA10NB (58X Series) ..... \*N2210-1
  - SPOA10 (58X Series) ..... \*N2207-1
  - SPO10 (58X Series)..... \*N2211-1
6. Rear Inner Arm
  - SPOA10NB (51X Series) ..... \*N2180-1
  - SPOA10 (51X Series) ..... \*N2179-1
  - SPO10 (51X Series)..... \*N2180-1

Rear Inner Arm

  - SPOA10NB (58X Series) ..... \*N2211-1
  - SPOA10 (58X Series) ..... \*N2208-1
  - SPO10 (58X Series)..... \*N2211-1
7. Front Outer 3-Stage Arm (5GX Series)..... \*N2224-1
8. Front Middle 3-Stage Arm (5GX Series) ..... \*N2220-10
9. Front Inner 3-Stage Arm (5GX Series)..... \*N2220-6
10. Rear Outer 3-Stage Arm (5GX Series) ..... \*N2225-1
11. Rear Inner 3-Stage Arm (5GX Series) ..... \*N2225-4
12. Stop Bolt Assembly ..... N219
  - 3/8" Internal Tooth Washer ..... 40843
  - 3/8"-16NC x 5/8" Lg. HHCS Grade 8 ..... 40155
13. 3-Stage Adapter Assembly..... FJ6191
14. Adapter Assembly ..... FJ6182
  - Rubber Pad..... FJ6158-4
15. Low Profile Adapter Assembly ..... FJ6202
16. Adapter Swivel Pin..... FJ79-6
17. High Step Adapter..... FJ6177
18. Low Step Adapter..... FJ6178
19. 3/32" Hog Ring for 1/2" Shaft (8 req'd) ..... FJ671-6
20. Adapter Pin ..... FJ6179

21. Arm Restraint Gear ..... N2122
22. 3/8" Spring Washers ..... 40818
23. 3/8"-16NC x 1-1/2" HHCS Grade 5..... 40200



**\*Notes: 50X, 51X, 58X, 5GX or 5NX Series?**

To find out if you have a **50X, 51X, 58X, 5GX or 5NX** series arms look at the **last (3) numbers on the end** of your lift model number.

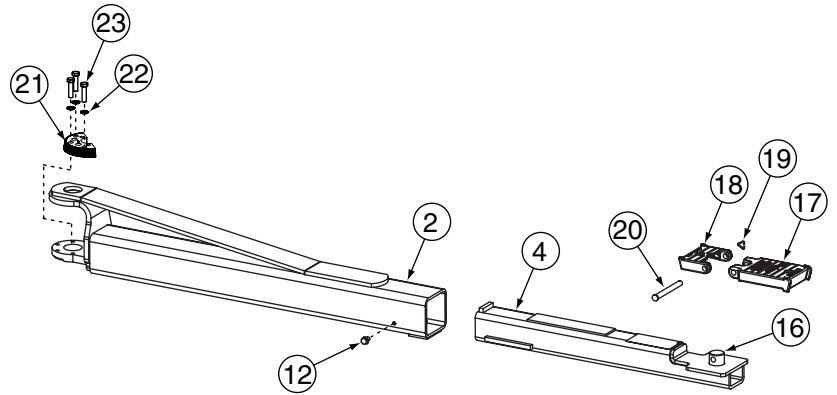
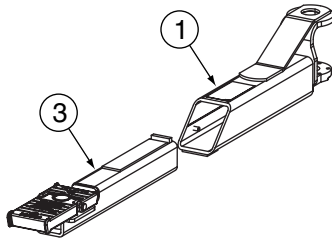
EXAMPLE: SPOA10N**585** would be a **58X Series** model.

↑

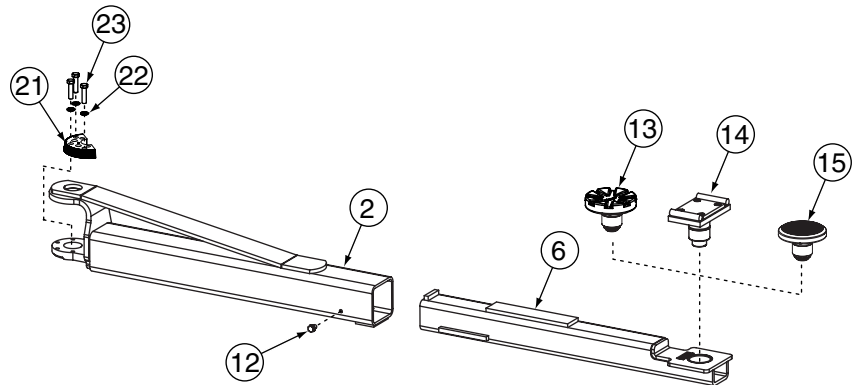
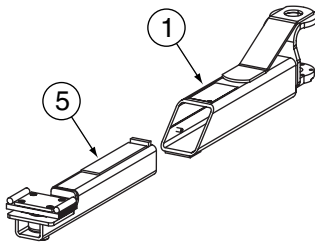
Model number can be found on a tag on the side of the lift. The "X" is a variable number used to fill the place of the actual last number on your lift model number tag.

# Arm Detail

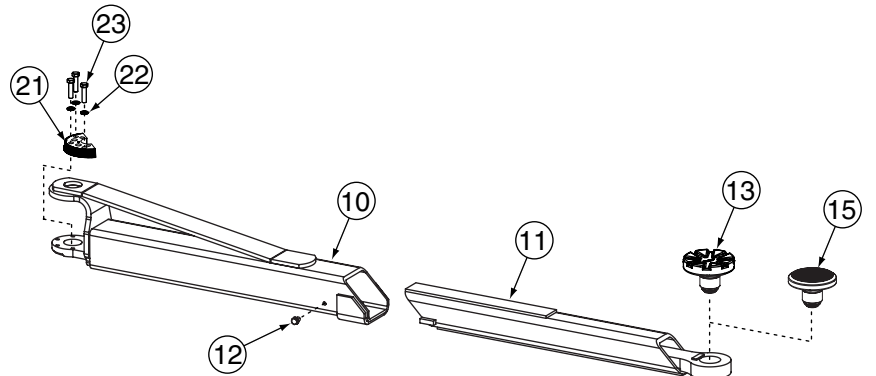
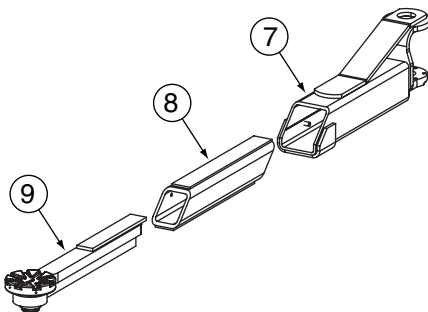
2-Stage Arms  
With Flip-Up Style Adapters  
(50X/5NX Series Models\*)



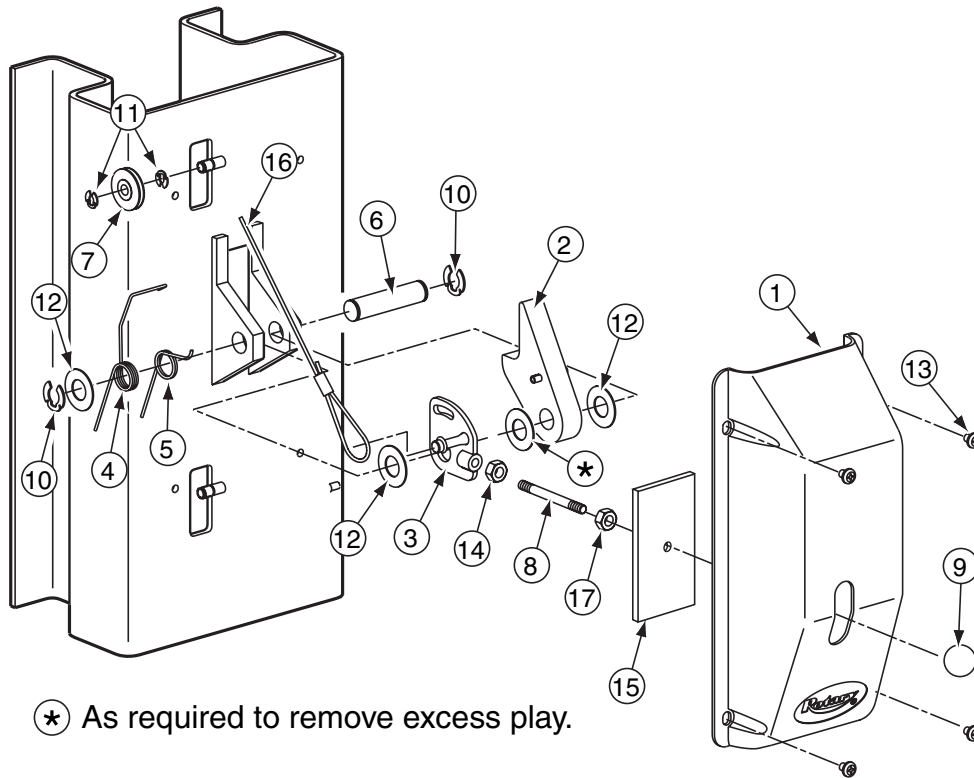
2-Stage Arms  
With Screw Style Rubber Adapters  
(51X/58X Series Models\*)



3-Stage Arms  
With Screw Style Rubber Adapters  
(5GX Series Models\*)

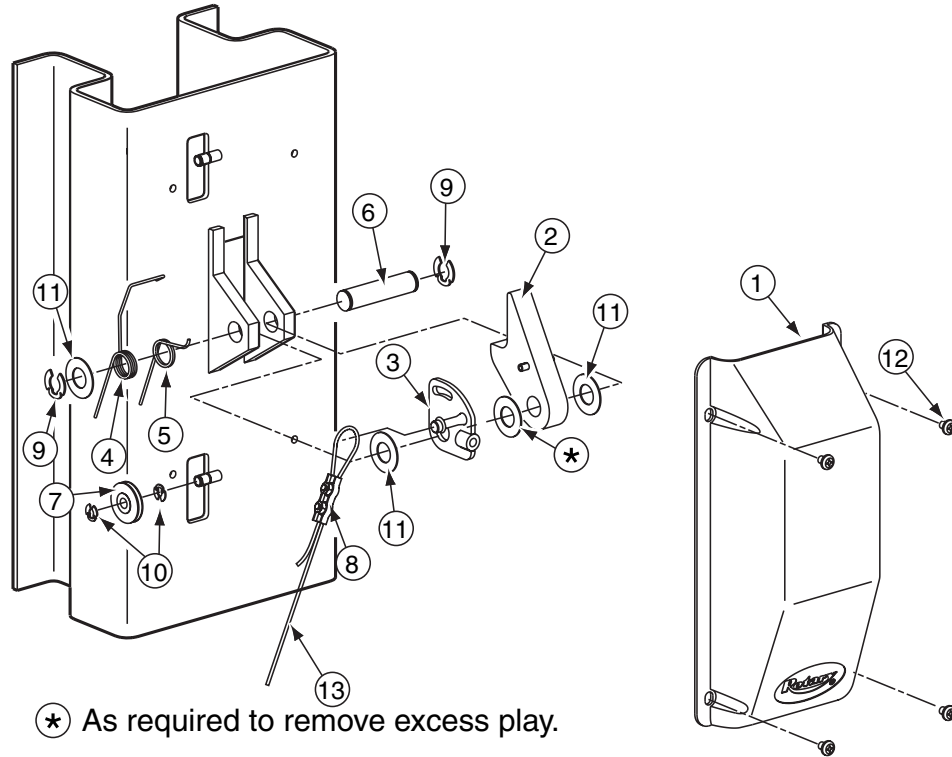


# Locking Latch Detail (Right Column)



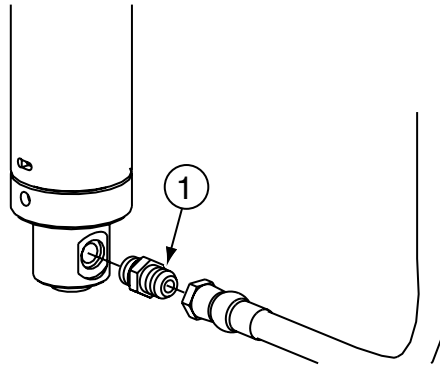
| ITEM | DESCRIPTION                                      | PART#     |
|------|--------------------------------------------------|-----------|
| 1.   | Control Side Cover .....                         | FJ7452    |
| 2.   | Locking Latch Dog .....                          | N616      |
| 3.   | Control Plate .....                              | FJ7594-2  |
| 4.   | Spring .....                                     | FJ7566-10 |
| 5.   | Spring .....                                     | FJ7382-9  |
| 6.   | Latch Shaft.....                                 | FJ7382-34 |
| 7.   | Locking Latch Sheave .....                       | FJ7322    |
| 8.   | Handle .....                                     | FJ7382-18 |
| 9.   | Ball Handle .....                                | FC134-91  |
| 10.  | Truarc Klipring #5304-75 for 3/4" Shaft.....     | 41411     |
| 11.  | Truarc Klipring #5304-37 for 3/8" Shaft.....     | 41410     |
| 12.  | 1-1/2" O.D. x 3/4" I.D. x .045" Mach. Bush. .... | 41388     |
| 13.  | 5/16"-18NC x 3/8" Lg. PHMS.....                  | 40227     |
| 14.  | 3/8" - 16NC Hex Jam Nut .....                    | 40658     |
| 15.  | Slot Cover .....                                 | N617      |
| 16.  | Locking Latch Cable .....                        | FJ7600    |
| 17.  | 1/2"-13NC Jam Nut (Spacer).....                  | 40700     |

# Locking Latch Detail (Left Column)



| ITEM | DESCRIPTION                                      | PART#     |
|------|--------------------------------------------------|-----------|
| 1.   | Latch Cover .....                                | FJ7451    |
| 2.   | Locking Latch Dog .....                          | N616      |
| 3.   | Control Plate .....                              | FJ7594-2  |
| 4.   | Spring .....                                     | FJ7566-10 |
| 5.   | Spring .....                                     | FJ7382-9  |
| 6.   | Latch Shaft.....                                 | FJ7382-34 |
| 7.   | Locking Latch Sheave .....                       | FJ7322    |
| 8.   | Latch Cable Clamp .....                          | N63-1     |
| 9.   | Truarc Klipring #5304-75 for 3/4" Shaft.....     | 41411     |
| 10.  | Truarc Klipring #5304-37 for 3/8" Shaft.....     | 41410     |
| 11.  | 1-1/2" O.D. x 3/4" I.D. x .045" Mach. Bush. .... | 41388     |
| 12.  | 5/16"-18NC x 3/8" Lg. PHMS.....                  | 40227     |
| 13.  | Locking Latch Cable .....                        | FJ7600    |

# Cylinder Hose Adapter Detail



| ITEM | DESCRIPTION            | PART#    |
|------|------------------------|----------|
| 1.   | Straight Adapter ..... | FJ7352-3 |

## DATE REV. CHANGE MADE

|          |   |                                                                                                                     |
|----------|---|---------------------------------------------------------------------------------------------------------------------|
| 08/11/05 | F | Update right and left Lock Latch Details to show new FJ7594-2 design and added FJ6202 Low Profile Adapter Assembly. |
| 12/6/05  | G | Added S model motor voltage information.                                                                            |
| 01/17/06 | H | Updated Locking Latch Cable part number.                                                                            |
| 8/10/06  | J | Updated powerunit part numbers and added barcode.                                                                   |
| 9/19/07  | K | Updated capacitor box part numbers.                                                                                 |
| 7/31/09  | L | Updated cylinder part numbers.                                                                                      |

**Rotary World Headquarters**  
 2700 Lanier Drive  
 Madison, IN 47250, USA  
[www.rotarylif.com](http://www.rotarylif.com)

**North America Contact Information**  
 Tech. Support: p 800.445.5438  
 f 800.578.5438  
 e [userlink@rotarylif.com](mailto:userlink@rotarylif.com)  
 Sales: p 800.640.5438  
 f 800.578.5438  
 e [userlink@rotarylif.com](mailto:userlink@rotarylif.com)

**World Wide Contact Information**  
 World Headquarters/USA: 1.812.273.1622  
 Canada: 1.905.812.9920  
 European Headquarters/Germany: +49.771.9233.0  
 United Kingdom: +44.178.747.7711  
 Australasia: +60.3.7660.0285  
 Latin America / Caribbean: +54.3488.431.608  
 Middle East / Africa: 1.812.273.1622



A DOVER COMPANY

