

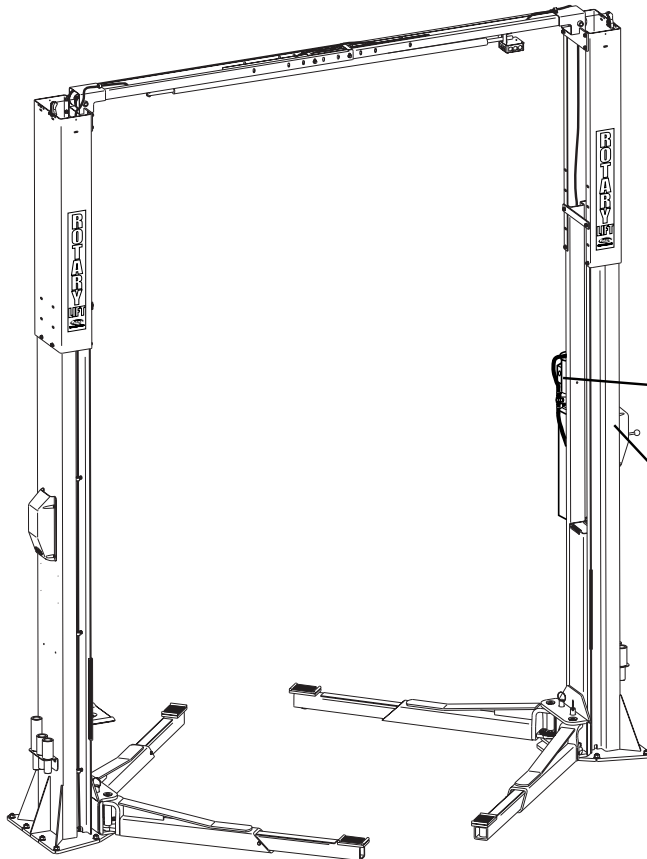


World Leader in Lift Systems

# SPO12

(300 Series)

Two Post Surface Mounted Frame Engaging Lift



|  |   |       |         |       |
|--|---|-------|---------|-------|
|  | PT#   | _____ | N°      | _____ |
|  | PH  | _____ | MAX AMB | _____ |
|  | DUTY  | _____ | INS     | _____ |
|  | THERMAL PROTECTION  |       | _____   |       |
|  | VOLTS   | _____ | HP      | _____ |
|  | AMPS  | _____ | Kw      | _____ |
|  | HZ  | _____ | RPM     | _____ |
|  |   |       | IP      | _____ |
|  | WARNING: MOTOR MUST BE GROUNDED IN ACCORDANCE WITH LOCAL AND NATIONAL ELECTRICAL CODES TO PREVENT SERIOUS ELECTRICAL SHOCKS |       |         |       |

|  |                                   |
|--|-----------------------------------|
|  | <b>IMPORTANT</b>                  |
| 800-445-5438                                       | DO NOT REMOVE THIS TAG            |
|  | WARRANTY IDENTIFICATION           |
| <b>MODEL:</b>                                      |                                   |
| <b>CAP. LBS:</b>                                   |                                   |
| <b>SERIAL NUMBER</b>                               |                                   |
| MADE IN THE USA                                    |                                   |
| MANUFACTURED UNDER ONE OF THESE PATENTS<br>5009287 |                                   |
|  | A  INDUSTRIES COMPANY Madison, IN |

P  
A  
R  
T  
S  
  
B  
R  
E  
A  
K  
D  
O  
W  
N

**IMPORTANT:** When ordering parts or requesting service always give exact model and power unit serial number. Model number is shown on nameplate attached to air lock release valve. Power unit serial number is located on side of power unit.

**OWNERS RECORD**  
Complete information at right and keep in a safe place.

Date Installed \_\_\_\_\_

Installed in Bay # \_\_\_\_\_

Power Unit Serial # \_\_\_\_\_

Power Unit Model # \_\_\_\_\_

Lift Serial # \_\_\_\_\_

Lift Model # \_\_\_\_\_

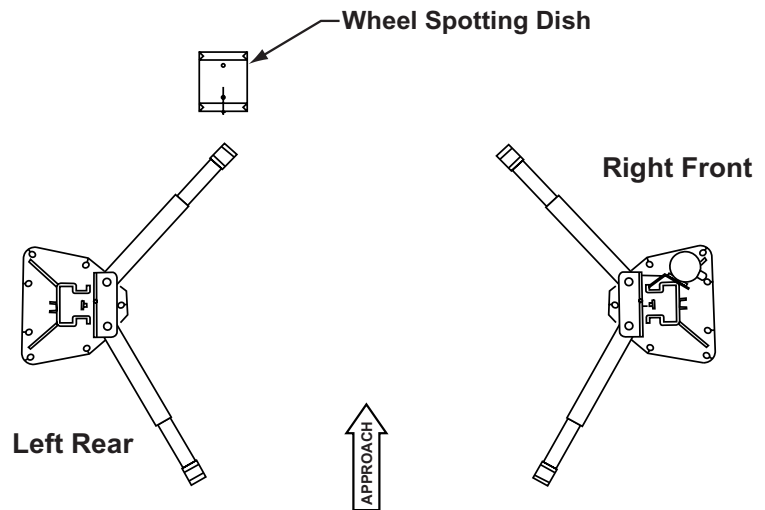
**NOTE:** For replacement parts -See your nearest Rotary Parts Distributor.

**PB 2-2-30-1**  
Rev. A 04/26/01

|     |  |          |
|-----|--|----------|
| 1   | L.H. Column Weldment   | N724     |
| 2   | R.H. Column Weldment   | N726     |
| 3   | Column Extension   |          |
|     | Standard Height  | N419     |
|     | EH-1 MODEL   | N420     |
|     | EH-2 MODEL   | N421     |
| 4   | Carriage Yoke Weldment   | N810     |
| 5   | Arm Pin  | FJ7838   |
| 6   | 3/16" x 2" Long Cotter Pin   | 41250    |
| 7   | Hydraulic Cylinder   | N342     |
| 8   | Power Unit   |          |
|     | SINGLE PHASE   | P1391    |
|     | THREE PHASE  | P1395    |
| 9   | Power Unit Hose  | N348     |
| 10  | 5/16"-18NC x 1-1/2" Bolt   | 40271    |
| 11  | 5/16" External Tooth Lockwasher  | 40854    |
| 12  | 5/16"-18NC Hex Nut   | 40670    |
| 13  | Actuator Pin Handle  | FJ7985-1 |
| 14  | Actuator Pin   | N121-1   |
| 15  | Retaining Pin  | N119-3   |
| 16  | Arm Restraint Spring   | FJ7656-2 |
| 17  | Bleeder Screw (Specify Manufacturer)   | 2REQ'D   |
| 18  | Carriage Bumper  | FJ7391-2 |
| 19  | 120T Gear Block  | FJ7749   |
| 20  | Approach bumper (door-18" Lg-2 req'd)  | FJ7391-1 |
| 21  | 5/8"-11NC Hex Nylon Insert Locknut   | 40743    |
| 22  | Truarc #5304-75 Klipping for 3/4" Shaft  | 41411    |
| 23  | Sheave   | N417-1   |
| 24  | 1/4"-20NC Zinc Hex Nut   | 40627    |
| 25  | Sheave Cover   | N119-1   |
| 26  | 1/4"-20NC x 3/8" Lg. PHMS Plated (2 pcs.)                                      | 40063    |
| 27  | Slider block   | FJ7360   |
| 28  | 3/4" Concrete Anchor (14 req'd)  | FJ7380   |
| 29  | 1-1/2" O.D. x .760-.770" I.D. x .045" Thick Mach. Bushing                      | 41388    |
| 30  | 1/4"-20NC x 2" HHCS  | 40109    |
| 31  | 1/4"-20NC Insert Locknut   | 41423    |
| 32  | 1/8" x 1" Lg. Cotter Pin   | 41200    |
| 33  | Switch Bar Assembly  | FJ7613-2 |
| 34  | Spotting Wheel Dish Kit  | FF729    |
| 35  | Restraint Gear   | FJ7750   |
| 36  | 3/8"-16 NC x 3/4" Long HHCS  | 40134    |
| 37* | Arm Restraint Kit (1 arm)  | *FJ7888  |
| 38  | Overhead Hose  |          |
|     | Standard Height  | N349     |
|     | EH-1 MODEL   | N350     |
|     | EH-2 MODEL   | N351     |
| 39  | Equalizer Cables   |          |
|     | Standard Height  | N39      |
|     | EH-1 MODEL   | N312     |
|     | EH-2 MODEL   | N313     |
| 40  | Stop Bolt  | N219     |
| 41  | Locking Latch Cable  |          |
|     | Standard Height Model  | FJ7595-1 |
|     | EH-1 & EH-2 Models   | FJ7600   |
| 42  | 3/8"-16NC x 1" Flanged HHCS  | 40144    |
| 43  | 3/8"-16NC Flanged Locknut  | 40664    |
| 44  | Sheave Shaft   | FJ7444-8 |
| 45  | 1/4"-20NC x 2" HHCS Grade 5  | 40109    |
| 46  | Latch Cable Guide  | N69      |
| 47  | Hose Clip (4 req'd-Overhead)   | FJ7206   |
| 48  | #12 Type B x 1/2" Lg. Slotted Hex Washer Head Tapping Screw (4 req'd-Overhead) | 40057    |
| 49  | 5/16"-18NC x 3/8" PHMS (6 req'd-Column)  | 40227    |
| 50  | Branch Tee   | FJ7668   |
| 51  | Hose Clip (6 req'd-Column)   | FJ7499   |
| 52  | Tie Bar  | N165-2   |
| 53  | 1/4"-20NC Flanged Locknut  | 40641    |
| 54  | 3/4" Spacer  | FJ7871   |

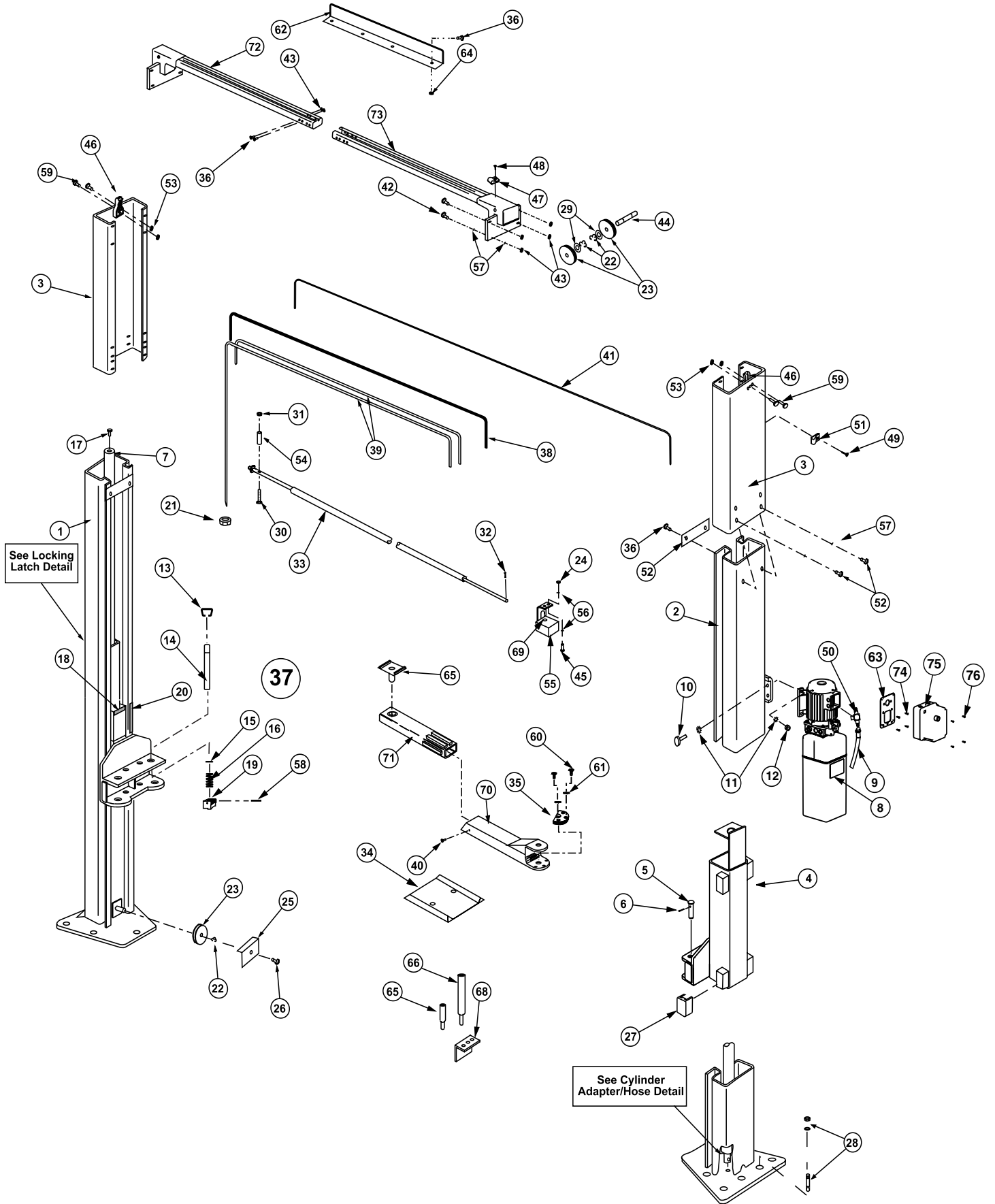
|    |   |          |
|----|---|----------|
| 55 | Limit Switch Assembly                         |          |
|    | For units using less than or equal to 250V    | N413     |
|    | For units using above 250 V                   | N414     |
| 56 | 1/4" External Tooth Lockwasher                | 40779    |
| 57 | 3/8" External Tooth Lockwasher                | 40845    |
| 58 | Spring Pin-1/4" dia. x 1-1/2" Lg. (Stainless) | 14427    |
| 59 | 1/4"-20NC x 1" HHCS Grade 5                   | 40108    |
| 60 | 3/8"-16NC x 1-1/2" HHCS Grade 5               | 40200    |
| 61 | 3/8" Spring Washers                           | 40818    |
| 62 | Stiffener Angle                               | N417-3   |
| 63 | Control Box Adapter Plate                     | FA7132-2 |
| 64 | 3/8"-16NC Flanged Locknut                     | 4 REQ'D  |
| 65 | Adapter                                       | FJ6158   |
| 66 | 4" Adapter Extension                          | FJ6143   |
| 67 | 8" Adapter Extension                          | FJ6144   |
| 68 | Adapter Rack                                  | FJ6145   |
| 69 | Limit Switch                                  |          |
|    | For units using less than or equal to 250V    | N413-1   |
|    | For units using above 250 V                   | FJ7979-1 |
| 70 | Outer Arm                                     | N25-1    |
| 71 | Inner Arm                                     | N25-2    |
| 72 | L.H. Overhead Weldment (Outer)                | FJ7447-1 |
| 73 | R.H. Overhead Weldment (Inner)                | FJ7446-1 |
| 74 | M5 x .7 x 8mm Flat Head MS                    | FA7152-1 |
| 75 | Control Panel                                 |          |
|    | 3Ø 208V/60Hz.                                 | FA7162   |
|    | 3Ø 230V/60Hz.                                 | FA7163   |
|    | 3Ø 460-480V/60Hz. or 380-415V/50Hz.           | FA7164   |
|    | 3Ø 480V/50Hz.                                 | FA7165   |
| 76 | #8-32NC x 1/2" Self Tapping Pan Head MS       | FA7152-2 |

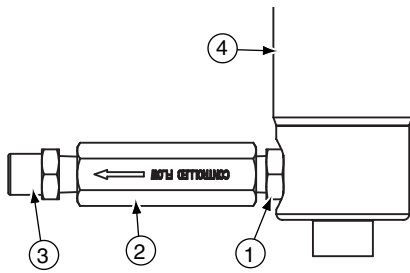
\* Includes items 13, 14, 15, 16, 19, 35, 58, 60, 61



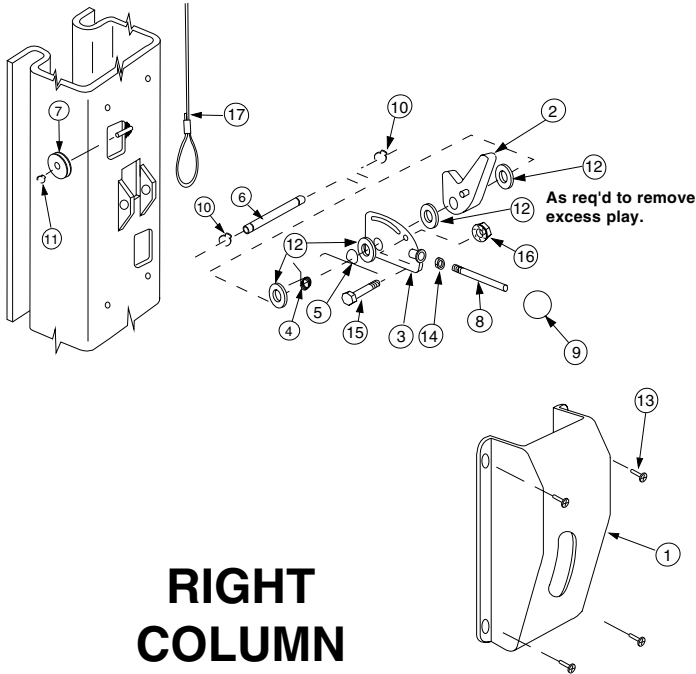
**NOTE:** Standard hardware items should be purchased from local hardware source when possible.

**CAUTION** Care should be taken to use hardware equal to that specified in this listing. (If grade is not specified, use Grade 2 minimum.)



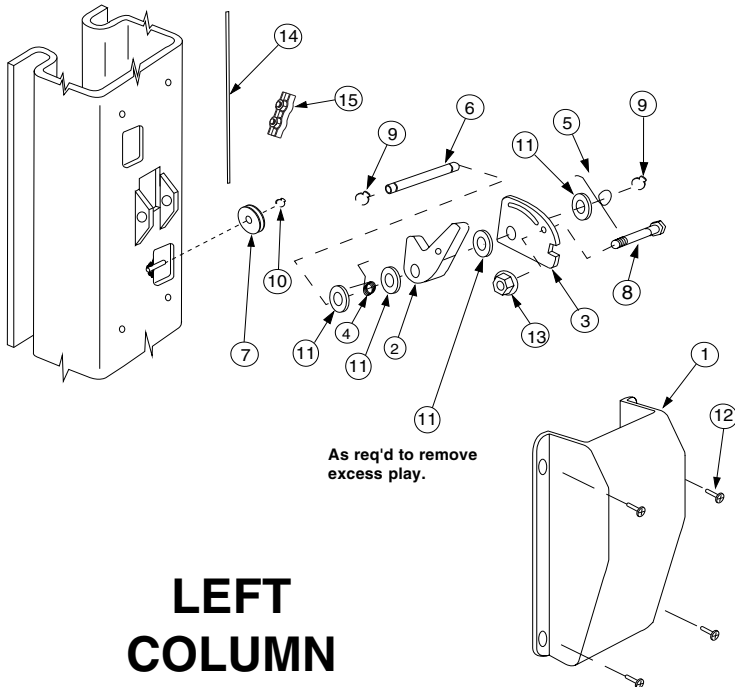


| CYLINDER ADAPTER/HOSE DETAIL PARTS LIST |                       |          |
|---|-----------------------|----------|
| ITEM NO.                                | DESCRIPTION           | PART NO. |
| 1                                       | Lenz 6-4APN Adapter   | 16095    |
| 2                                       | Flow Control          | N344-1   |
| 3                                       | Lenz 3105-6-4 Adapter | 16094    |
| 4                                       | Hydraulic Cylinder    | N342     |



## RIGHT COLUMN

| LOCKING LATCH DETAIL PARTS LIST |   |           |
|---------------------------------|---|-----------|
| ITEM NO.                        | DESCRIPTION                                 | PART NO.  |
| 1                               | Control Side Cover                          | FJ7452    |
| 2                               | Locking Latch Dog                           | N165-1    |
| 3                               | Control Plate                               | FJ7382-5  |
| 4                               | Spring                                      | FJ7566-10 |
| 5                               | Spring                                      | FJ7382-9  |
| 6                               | Latch Shaft                                 | FJ7382-34 |
| 7                               | Locking Latch Sheave                        | FJ7322    |
| 8                               | Handle                                      | FJ7382-18 |
| 9                               | Ball Handle                                 | FC134-91  |
| 10                              | Truarc Klipring #5304-75 for 3/4" Shaft     | 41411     |
| 11                              | Truarc Klipring #5304-37 for 3/8" Shaft     | 41410     |
| 12                              | 1 1/2" O.D. x 3/4" I.D. x .045" Mach. Bush. | 41388     |
| 13                              | 5/16"-18NC x 3/8" Lg. PHMS                  | 40227     |
| 14                              | 3/8" - 16NC Hex Jam Nut                     | 40658     |
| 15                              | Shoulder Bolt, 5/16"-20 NC x 1- 1/4"        | 40220     |
| 16                              | Flanged Locknut, 1/4" - 20NC                | 41423     |
| 17                              | Latch Cable                                 | FJ7595-1  |
|                                 | EH-1 and EH-2                               | FJ7600    |



## LEFT COLUMN

| LOCKING LATCH DETAIL PARTS LIST |   |           |
|---------------------------------|---|-----------|
| ITEM NO.                        | DESCRIPTION                                 | PART NO.  |
| 1                               | Latch Cover                                 | FJ7451    |
| 2                               | Locking Latch Dog                           | N165-1    |
| 3                               | Control Plate                               | FJ7382-5  |
| 4                               | Spring                                      | FJ7566-10 |
| 5                               | Spring                                      | FJ7382-9  |
| 6                               | Latch Shaft                                 | FJ7382-34 |
| 7                               | Locking Latch Sheave                        | FJ7322    |
| 8                               | Shoulder Bolt 5/16"-20NC x 1-1/4"           | 40220     |
| 9                               | Truarc Klipring #5304-75 for 3/4" Shaft     | 41411     |
| 10                              | Truarc Klipring #5304-37 for 3/8" Shaft     | 41410     |
| 11                              | 1 1/2" O.D. x 3/4" I.D. x .045" Mach. Bush. | 41388     |
| 12                              | 5/16"-18NC x 3/8" Lg. PHMS                  | 40227     |
| 13                              | Flanged Locknut, 1/4" - 20NC                | 41423     |
| 14                              | Latch Cable                                 | FJ7595-1  |
|                                 | EH-1 and EH-2                               | FJ7600    |
| 15                              | Latch Cable Clamp                           | N63-1     |

World Headquarters  
**Rotary Lift**  
 A Dover Industries Company  
 2700 Lanier Drive  
 Madison, IN 47250-1753 USA  
 Phone toll-free: 800.445.5438  
 Phone: 812.273.1622  
 Fax toll-free: 800.822.6502  
 Fax: 812.273.6502  
 Email: [userlink@rotarylif.com](mailto:userlink@rotarylif.com)  
 Web site: [www.rotarylif.com](http://www.rotarylif.com)

Canada  
 (Regional Sales Office)  
**Dover Corp. (Canada) LTD.**  
**Rotary Lift Division**  
 130 Bridgeland Avenue Unit 210  
 Toronto, Ontario  
 Canada M6A 1Z4  
 Phone: 416.256.4100  
 Fax: 416.256.3924  
 Email: [canlink@rotarylifca.com](mailto:canlink@rotarylifca.com)

United Kingdom  
 (Regional Sales Office)  
**Rotary Lift (UK) LTD.**  
 3, Fourth Avenue  
 Bluebridge Industrial Estate  
 Halstead, Essex CO9 2SY  
 United Kingdom  
 Phone: +44.178.747.7711  
 Fax: +44.178.747.7720  
 Email: [sales@rotarylif.idps.co.uk](mailto:sales@rotarylif.idps.co.uk)

Austral-Asia  
 (Regional Sales Office)  
**Rotary Lift Austral/Asia**  
 3A03, Block A, Phileo Damansara 1  
 9, Jalan 16/11, Off Jalan Damansara  
 46350 Petaling Jaya  
 Selangor Darul Ehsan, Malaysia  
 Phone: +60.3.7660.0285  
 Fax: +60.3.7660.0289  
 Email: [rlim@rotarylif.com](mailto:rlim@rotarylif.com)

Germany  
 (European Manufacturing Headquarters)  
**Rotary Lift Germany GmbH**  
 Lilienthalstr. 26  
 64625 Bensheim  
 Germany  
 Phone: +49.6251.582.640  
 Fax: +49.6251.582.6422  
 Email: [sales@rotarylif.de](mailto:sales@rotarylif.de)

Italy  
 (European Manufacturing Headquarters)  
**Rotary Lift Europe S.r.l.**  
 Via Tiburtina, Km 209 & 800  
 65025 Manoppello Scalo  
 Italy  
 Phone: +39.085.856.9058  
 Fax: +39.085.856.9059  
 Email: [rotary.europe@rotaryeurope.com](mailto:rotary.europe@rotaryeurope.com)

